



International Institute of Security & Safety Management



Let's professionalize the professionals...



Newsletter of NCR Chapter : June 2007



Violence in the workplace

The recent shootout incident in HCL Technologies have drawn everyone's attention and more especially of security professional on the issue of workplace violence! Violence in the workplace is a serious safety and health issue. Its most extreme form, homicide, is the fourth-leading cause of fatal occupational injury in the United States. According to the Bureau of Labor Statistics Census of Fatal Occupational Injuries (CFOI), there were 551 workplace homicides in 2004 in the United States, out of a total of 5,703 fatal work injuries.

Environmental conditions associated with workplace assaults have been identified and control strategies implemented in a number of work settings. OSHA has developed guidelines and recommendations to reduce worker exposures to this hazard.

The report describes the different types of workplace crimes, their frequency of occurrence, the characteristics of the victims and offenders, victimization by profession, the victim/offender relationship, and how many of these victimizations are reported to law enforcement. The report examines workplace victimizations both as trends from 1993 to 1999 and in the aggregate.

Highlights include the following:

- Of the occupations examined, police officers experienced workplace violent crime at rates higher than all other occupations (261 per 1,000 persons)
- Most workplace victimizations were interracial.
- More than 80% of all workplace homicides were committed with a firearm.

Capt S B Tyagi, FISM, CSC
Secretary, NCR Chapter, IISSM



Role of Security Managers

What does it mean to be responsible for the protection of valuable assets and employees? How are security resource-allocation considerations factored into corporate, private, educational, and governmental planning programs? What are the challenges facing security practitioners and administrators in today's multi-dimensional business world?

The answers to these questions are often complex, with differing implications for a broad range of interests. What is straightforward, though, is the need for the effective safeguarding of important property, information, and individuals. Providing quality protective and safety measures for a continuously-expanding landscape of potential vulnerabilities is a responsibility that requires diverse minds, competent abilities, proven achievements, and broad-based experiences.

The security doesn't function in isolation in any organization. It's reports and observations are important to production, operation & maintenance, storage and fire & safety departments. Thus world over concept of Security is morphing in to Total Loss Prevention. Similarly roles of security professionals are also changing.

Changing roles of security professionals

The prevention of security incidents is becoming increasingly difficult in a world of rapidly evolving technology, instantaneous communication, and highly sensitive contrasts in political and cultural agendas. Not only are security professionals searching for answers to unique and complicated situations, but in today's business environment of shifting job responsibilities, many non-security professionals are being asked to address a broad range of security concerns. Oftentimes, in the face of a crisis, a lack of procedural understanding augments a confusion of job responsibilities to produce an unwanted, sometimes unrecoverable outcome.

In changing scenario the role and responsibilities of security managers have undergone tremendous changes! They are no more heading the guarding force. They are heading a team equally committed and contributing to productivity and profitability of the organization. The security managers are called upon to perform various duties hitherto unrelated to security functions. May it be facility management or the event management, may it be reduction in shrinkages or prevention of losses, role of security managers got entwined with other roles.

In present days, following are the role and responsibilities of security managers and security administrators -

Security Managers

Security managers are responsible for the assessment, resolution, and maintenance of effective security requirements within the organization. As such, this role has senior management responsibility. The security manager leads the organization in developing effective strategies for:

- Identifying the most important requirements in developing a secure environment.



- Identifying the types of data in the organization and the level of security required to protect this data.
- Identifying and documenting business-focused security rules
- Identifying security issues and managing identified risks
- Responding to security incidents

Security Administrators

Security administrators are responsible for the ongoing management of security infrastructure within the organization. When the organizational policy has been defined and the security mechanisms identified, security administrators will:

- Establish the detailed configuration of security solutions
- Deploy the security solutions, managing the provision of access to staff within the organization.
- Maintain the delivery of the security solutions.
- Monitor the components and the overall security implementation
- Evaluate potential security problems that may occur on a system
- Report on security issues that occur

New areas of specializations

New vistas are opening for security professionals to acquire new roles based on their areas of specialization. Those with forensic training will become hand-writing expert or specialize in fraud investigation, evaluating the evidence etc. Whereas those trained and expert in small arms and close-quarter combat may specialize in personal security. Similarly select few with high degree of computer and network knowledge will be preferred by BPO industries. Following are few areas needing special knowledge and expertise of security of related field -

- **Security of Public Places**
- **Crime Investigation**
- **Detective Duties**
- **Forensic Investigations**
- **Crime Records & Archives**
- **Railway & Highway Security**
- **Network & Data Centre Security**
- **Emergency Response Centers**
- **Identity Thefts**
- **Special Event security**
- **Merger & acquisition**

Multi dimensional threats to the national security, corporate world and industrial organizations have increased many folds and emanate from international terrorism, communalism, sabotage, espionage, subversion, pilferages, thefts, cyber & white collar crimes, bomb threats, natural and manmade disasters etc. Both Central & State Governments are unable to protect corporate, industry and business resulting in colossal avoidable losses. Industrial security is thus, no longer



mere 'CHOWKIDARI' but an all-pervasive management function of asset protection, loss prevention and crisis management etc.

In the complex situation in which security concern of the industries need to be answered and since government's resources are found to be limited, the silver-lining appears indicating the possibility of public and private partnership which will strengthen the government's limited resources and qualitatively improve the security measures for the industry. We have already witnessed few signs of synergy between private and public security apparatus. During the elections, deployment of private security personnel at police stations in few states or the use of private security personnel for public functions by some of the state governments are some of such examples.

Purchasing and Installing Your Home Fire Alarm System & Smoke Detectors

What Kind of Smoke Detector Should I Buy?

Each type of detector, if properly installed and maintained, is effective. Since photoelectric detectors react more quickly to smoldering fires and ionization units will respond faster to flaming fires, you may wish to buy at least one unit of each or a combination detector. However, because most home fires produce a mixture of smoke types with detectable amounts of large particle and small particle smoke early in the fire growth, either ionization or a photoelectric detector will meet most needs.

Several new features are available in smoke detectors today. These include detectors that have an escape light, are portable, or transmit their alarm to a central console by radio signal as part of a unified emergency alert system. These can be used with burglar and other warning or detection devices. Electric current detectors with a rechargeable battery for power outages are also available.



Control Panel



Smoke Detector



Alarm

How Many Do I Need?

There should be at least one smoke detector on every floor of the house. Tests conducted have shown that two detectors, on different levels of a two-story home, are twice as likely to provide enough time for escape as one detector. Although the upstairs detector senses smoke wherever it originates, the downstairs unit will react sooner to a fire that could block escape routes on the first floor.



Having two detectors also allows you to select both an ionization type and a photoelectric model, giving you the best capabilities of both. In addition, it lets you select one battery-powered and one plug-in or wired-in model. Neither a battery failure nor a power outage will leave your family unprotected. Finally, two smoke detectors are far less likely to be inoperative at the same time as is possible with a lone detector.

How to Shop for a Smoke Detector

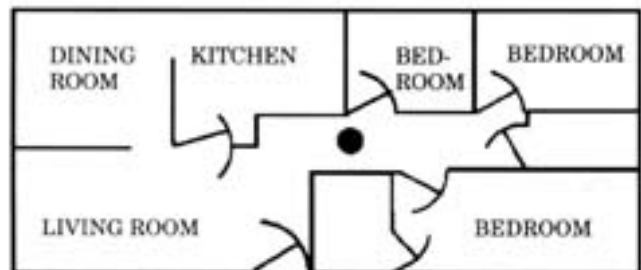
When shopping for a smoke detector, consider these suggestions:

- Look for a laboratory seal of approval or a statement on the package or unit itself. A seal of approval indicates that the detector has been tested and certified by a recognized testing organization. Such a seal ensures that the unit meets certain standards of operation and sensitivity. The seal from Underwriter's Laboratories (UL) is a common seal.
- Be certain that the detector has clear and detailed instructions that tell you how to install it, suggest where to place it, and provide directions for testing and maintenance.

Where Should I Install Smoke Detectors?

Where you place smoke detectors depends on the size and layout of your home, and where people sleep in your home. Since the primary job of a smoke detector is to awaken sleeping persons and warn them of urgent danger, put your detector as close as possible to the bedrooms or other places where people frequently sleep. If two sleeping areas are separated, each should have its own detector. The hallway next to the bedrooms or other sleeping areas should be a priority location for detectors.

If bedroom doors are normally closed at night, detector locations within each bedroom might be considered, particularly if the occupant smokes in bed. Closed doors usually offer some protection against both fire and smoke from outside the room. However, they may make it more difficult to hear a detector alarm outside the bedroom. More significantly, they can keep smoke produced by a fire in a bedroom from reaching a detector in the hall.



In single floor homes, the detector should be placed in the hallway near the bedrooms. In a house where the bedrooms are upstairs, one detector should be near the top of the stairs to the bedroom area. The simplest rule for locating one smoke detector in your home should be "between the bedrooms and the rest of the house, but closer to the bedrooms." If you are installing multiple detectors, put one near each sleeping area. It is also a good idea to make certain there is one on each level of the house. The basement ceiling, near the steps to the rest of the house, is another



good location. Don't put detectors within six inches of where walls and ceilings meet, or near heating and cooling ducts. Detectors located in these areas may not receive the flow of smoke required to activate the alarm.

In homes with more than one sleeping area on the same level or on different levels, a smoke detector should be installed to protect each separate sleeping area. In a one-floor plan with only one sleeping area, the smoke detector should be placed between the sleeping area and the rest of the house.

In a one-floor plan (top) with only one sleeping area, the smoke detector should be placed between the sleeping area and the rest of the house. In homes with more than one sleeping area on the same level or on different levels (top), a smoke detector should be installed to protect each separate sleeping area.

How to Take Care of Your Smoke Detector

Smoke detectors don't need much attention. Regular testing and prompt replacement of batteries or bulbs is generally all that is needed. However, if you neglect these few requirements, your detector won't do its job if a fire starts.

Monthly Testing

At least once every month, test your detector by holding a candle six inches under it. If you're testing an ionization detector, let the flame burn. To test a photoelectric unit, extinguish the candle and let visible smoke drift into the detector. Heavy tobacco smoke also will work. The unit's alarm should begin to sound within twenty seconds. To stop the alarm, fan the smoke away from the detector. Soon the detector will become silent, and you can walk away knowing it's still on guard.

Using real smoke is more dependable than pressing the "test" button found on many older smoke detectors. In some older units, the button only starts the warning sound, and does not tell you whether the detector circuit itself is working. Some newer detectors have more refined test systems that simulate the presence of smoke in the chamber. These don't need to be tested with real smoke. Check the package or instructions of your detector to see if it has this feature.

Some authorities suggest testing every two weeks. This should not reduce battery life significantly. Testing more often than this may shorten your battery's life.

Replace Batteries and Lamps At Once

Batteries will last approximately one year. If your battery-powered detector begins to emit its low-power warning sound, remove the weak battery and replace it immediately with a fresh one. Have a new battery on hand always.

Replacement lamps for photoelectric detectors also should be kept on hand so no delay occurs in restoring their function. Owner neglect of testing and part replacement has been a cause of smoke detector failure, often resulting in tragedy.



Don't Play "False Alarm"

The detector is not a toy. Remind everyone in your family that it should not be operated, or even touched, except to test, maintain, and clean. Some authorities suggest using the detector test feature to operate the alarm as part of a family "fire drill" on occasion. Operating the alarm excessively draws heavily on battery power, and may cause a malfunction when it's needed most. Do not respond to "nuisance" alarms (cooking, fireplaces, etc.) by disconnecting the battery. Either fan away the smoke or relocate the detector.

If It "Acts Up"

Most manufacturers back their detectors with a service or replacement warranty. If your detector begins to malfunction during the warranty period, follow the warranty procedure listed in the use and care literature. In some instances you can return the unit to the store from which it was bought. You may be instructed to send the unit directly to the manufacturer.

Protect Your Family from Fire

- Purchase one or more smoke detectors.
- Install smoke detectors near where individuals sleep.
- Take care of your smoke detector.
- Develop and rehearse an escape plan so when your detector sounds, family members react appropriately.

Personal Safety Gadgets

About the Author:

Rajiv Mathur is a seasoned professional with about 15 years of experience in the industry. A Management graduate in Human Resource and Marketing, he has also acquired additional qualifications in the field of Information & Systems Management.

As spearheading the activities of **Vision Security as its Vice President** he believes in Knowledge based management of a field force of about 5000 security personnel and 16 offices across India. He has been instrumental in getting ISO certification for the organization.

He is also Joint Secretary of the NCR Chapter of IISSM.



With the above statement as the basis of the endeavors, all personnel safety and security gadgets are launched, which are easy to use and help in self and material protection. Without the scientific gimmicks and long technical products' literature hard to be understood, these products are user friendly and really a friend in need.

Under the brand name of **24 Secure**, these products will be available shortly off-the shelf at various outlets near you.

To know little bit more about them, please read on...



Nap Zapper

The Nap Zapper is an anti-drowsy alarm designed to raise driver's awareness of momentary lapses caused by sleepiness and tiredness. Wear behind the right ear; it works on the principal of electronic balance. As the drivers head nods below a present angle it emits a loud alarm signal alerting the driver to take corrective action, take a break or even take a nap. The Nap Zapper is not only designed for drivers, it is perfect for people who need to be on full alert while on duty such as security guards, machine operators and even students who need to work on their posture



Electronic Personal Reminder Alarm



As the name suggests, it is a personal reminder alarm. It prevents objects leaving somewhere, children leaving adults, prevents baggage or purse being stolen and also prevents pets losing. It is a Transmitter - Receiver where Transmitter is to wear on the object to be protected and the receiver is to wear on the owner. It works freely at a distance within 0 – 20 meters. The distance has to be adjusted according to the object to be protected for example the distance for articles like luggage or wallet is set about 3 meters whereas the distance for children is relatively farther.

Window/Door Guard

This alarm works on magnetic principle to safeguard entry through Doors & Windows particularly at unwanted times like at night. It is installed inside at the Doors & windows panes from the inside by simply sticking it at the panes.



When someone tries to enter through it at time of activation, there is a very loud noise alerting the inhabitants, guards & shooing away the intruder. Wireless & easy installation makes it very useful & handy despite being a very effective way to keep a check on the miscreants. Could be used as per requirement at Residences, small offices etc.

Safe Football

It is a personnel panic alarm which provides a very loud noise of 120 decibel in times of distress. It has additional safety spotlight built along with making it useful at all times. It is suitable for Elderly, Disabled, Night Shift Workers and Women and People who live alone.



Door Knob Alarm



This alarm works on magnetic principle to safeguard entry through Doors particularly at unwanted times like at night. It is hung on the door knobs from inside. When someone tries to enter through it at time of activation, there is a very loud noise of 120 db alerting the inhabitants, guards & shooing away the intruder. Wireless & easy installation makes it very useful & handy despite being a very effective way to keep a check on the miscreants.



For more details Author may be contacted at rajiv@thisisvision.com.

Three Nigerians arrested at Delhi airport

New Delhi: Three Nigerian nationals were arrested at Delhi's international airport, just before they were to fly out of India, for allegedly cheating many Delhites in a lottery scam, police said Monday.

Sleuths of Delhi Police's Crime Branch Sunday arrested the trio - identified as Obinna Emmaemi, Okey Ammezi and Ubagu Austin - from the Indira Gandhi International Airport for allegedly duping mainly south Delhi based people of millions.

According to police, they used to send emails from accounts lottery3@won.com, uk_lotto_office12@yahoo.co.uk and master12@planet.nl , informing the recipients that they had been selected in a 'Euro-Afro-Asian Sweepstakes Lottery Programme' held in Britain or Amsterdam or China and had won amounts ranging from Rs.10 million to Rs.20 million. The trio won their victims' confidence by telling them that the lottery programme was promoted and sponsored by the Sultan of Brunei or Bill Gates of Microsoft Inc, police said.

"The victims were asked to deposit a bank draft of \$525 in a foreign bank account if they wished to draw their prize. The victims were further demanded of \$2,500 towards 'clearance and delivery taxes'," Deputy Commissioner of Police A.S. Cheema said.

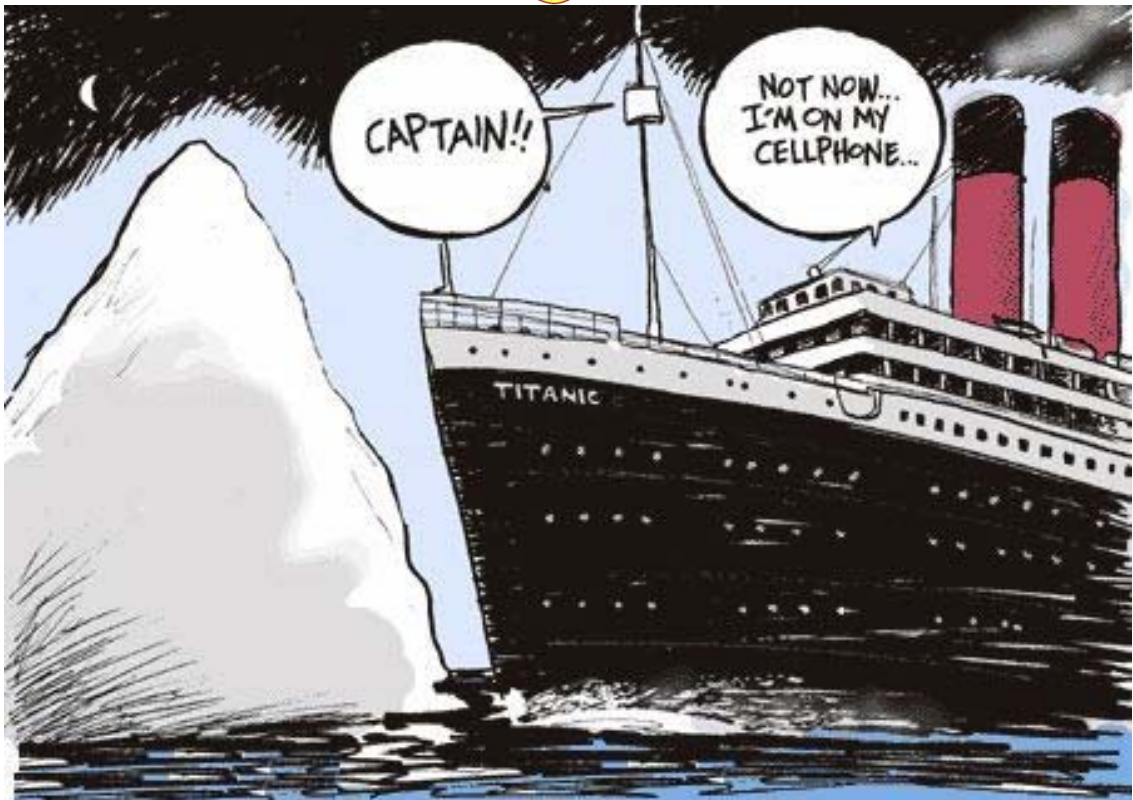
"Till now we have come to know of five victims and more people are expected to approach us after the trio's arrest. Further investigations are underway," he added. Police said two laptop computers with an extra hard disk, forged visa documents and six mobile phones were recovered from them. (IANS)

<http://www.punjabkesari.com/frmChNewsDetails.aspx?uid=51883&CatName=Delhi>

Eunoia

When you have been teaching bad ideas to people for a couple of generations, they tend to catch up with you.

- Gurcharn Das, Columnist



Dates to Remember!
Certification Courses for CSP
(Certified Security Professional)

From 27-30 June 2007 at Goa. For registration for attending this high value, high demand course, please contact -

- Mr. D C Nath, Executive President & CEO, IISSM at nathdc@iissm.com,
Mobile: 9811995693
- Lt. Gen. Prem Sagar, Executive President (C&F), IISSM at premsagar@iissm.com
Mobile: 9899078687

Details of these courses and fees can also be obtained from home page of IISSM at <http://www.iissm.com/>

Suggestions & feedback may be sent to us on e-mail: captsbtyagi@yahoo.co.in
